

Flashbay Electronics
Building2, Jixun Industrial Park, Xinjiao, Dong'ao
Village, Shatian Town, Huiyang District, Huizhou
City, Guangdong Province, P.R.China

**DEKRA Testing and Certification
(Shanghai) Ltd., Guangzhou Branch**
Block 5, No.3, Qiyun Road, Huangpu
District, Guangzhou, Guangdong, China
Tel.: +86 20 6661 2000
Fax: +86 20 6661 2001

Contact
Devin Ai
Tel.: +86 20 6684 3294
E-Mail: devin.ai@dekra.com
Page 1 of 7

TEST REPORT

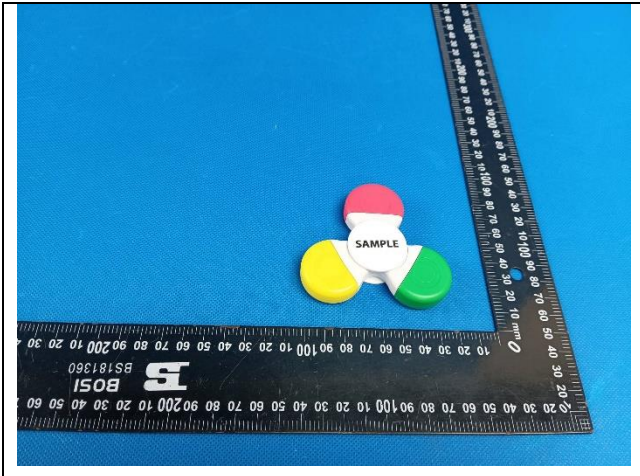
Test Report No. : 4932514.53 Version 1
Project No. : 4932514.00
Test Report Date : 2025-02-05

Job No. : 25-00152
Applicant : Flashbay Electronics
Building2, Jixun Industrial Park, Xinjiao, Dong'ao Village, Shatian
Town, Huiyang District, Huizhou City, Guangdong Province, P.R.China
Product Name : Pen
Model No. : Twinkle (TK)

<i>Test Requested</i>	<i>Conclusion:</i>
1) Toxic Substances Control Act - 2,4,6-tris(tert-butyl) phenol (2,4,6-TTBP)	PASS
2) Toxic Substances Control Act - Pentachlorothiophenol (PCTP)	PASS
3) Toxic Substances Control Act - Hexachlorobutadiene (HCBD)	PASS
4) Toxic Substances Control Act - Decabromobiphenylether (decaBDE)	PASS
5) Toxic Substances Control Act - Phenol, isopropylated phosphate (PIP(3:1))	PASS

Sample Received : 2025-01-16, 2025-01-20
Testing Period : 2025-01-16 to 2025-01-24
Test Results : Refer to data listed in following pages

TESTED SAMPLE PHOTO:



Signed for and on behalf of

DEKRA Testing and Certification (Shanghai) Ltd., Guangzhou branch

Chemical & Mechanical



Devin Ai
Laboratory Manager

Attention: Please note that every statement made in this report is only valid for the samples tested and reported herein. This report shall not be reproduced except in full, without the written approval of the testing laboratory.

TESTED COMPONENTS:

- (1) Light grey plastic (printed sample)
- (2) Black coating on plastic (printed sample)
- (3) Red plastic (pen case)
- (4) Yellow plastic (pen case)
- (5) Green plastic (pen case)
- (6) Light grey plastic (body)
- (7) Transparent plastic (red/yellow/green pen body)
- (8) Inaccessible white plastic (end of pen)
- (9) Inaccessible transparent plastic (pen cap)
- (10) White plastic excluding ink (pen refill)
- (11) Pink ink (pen refill)
- (12) Green ink (pen refill)
- (13) Yellow ink (pen refill)

TEST RESULTS

1) Toxic Substances Control Act- 2,4,6-tris(tert-butyl) phenol (2,4,6-TTBP)

With reference to EPA 3550C:2007 & EPA 8270E:2018, Analysis was performed by solvent extraction, followed by Gas Chromatography Mass Spectrometric (GC/MS).

Test Item	CAS No	Result (%)					MDL (%)	Limit (%)
		(1)	(2)	(3)	(4)	(5)		
2,4,6-tris(tert-butyl)phenol (2,4,6-TTBP)	732-26-3	N.D.	N.D.	N.D.	N.D.	N.D.	0.005	0.3

Test Item	CAS No	Result (%)				MDL (%)	Limit (%)
		(6)	(7)	(8)	(9)		
2,4,6-tris(tert-butyl)phenol (2,4,6-TTBP)	732-26-3	N.D.	N.D.	N.D.	N.D.	0.005	0.3

Test Item	CAS No	Result (%)				MDL (%)	Limit (%)
		(10)	(11)	(12)	(13)		
2,4,6-tris(tert-butyl)phenol (2,4,6-TTBP)	732-26-3	N.D.	N.D.	N.D.	N.D.	0.005	0.3

Remark:

1. N.D. = Not Detected (below MDL)
2. MDL = Method Detection Limit
3. % = Percentage

2) Toxic Substances Control Act- Pentachlorothiophenol (PCTP)

With reference to EPA 3550C:2007 & EPA 8270E:2018, Analysis was performed by solvent extraction, followed by Gas Chromatography Mass Spectrometric (GC/MS).

Test Item	CAS No	Result (%)					MDL (%)	Limit (%)
		(1)	(2)	(3)	(4)	(5)		
Pentachlorothiophenol (PCTP)	133-49-3	N.D.	N.D.	N.D.	N.D.	N.D.	0.005	1

Test Item	CAS No	Result (%)				MDL (%)	Limit (%)
		(6)	(7)	(8)	(9)		
Pentachlorothiophenol (PCTP)	133-49-3	N.D.	N.D.	N.D.	N.D.	0.005	1

Test Item	CAS No	Result (%)				MDL (%)	Limit (%)
		(10)	(11)	(12)	(13)		
Pentachlorothiophenol (PCTP)	133-49-3	N.D.	N.D.	N.D.	N.D.	0.005	1

Remark:

1. N.D. = Not Detected (below MDL)
2. MDL = Method Detection Limit
3. % = Percentage

3) Toxic Substances Control Act-Hexachlorobutadiene (HCBd)

With reference to EPA 3550C:2007 & EPA 8270E:2018, Analysis was performed by solvent extraction, followed by Gas Chromatography Mass Spectrometric (GC/MS).

Test Item	CAS No	Result (%)					MDL (%)	Limit (%)
		(1)	(2)	(3)	(4)	(5)		
Hexachlorobutadiene (HCBd)	87-68-3	N.D.	N.D.	N.D.	N.D.	N.D.	0.005	Not Detected

Test Item	CAS No	Result (%)				MDL (%)	Limit (%)
		(6)	(7)	(8)	(9)		
Hexachlorobutadiene (HCBd)	87-68-3	N.D.	N.D.	N.D.	N.D.	0.005	Not Detected

Test Item	CAS No	Result (%)				MDL (%)	Limit (%)
		(10)	(11)	(12)	(13)		
Hexachlorobutadiene (HCBd)	87-68-3	N.D.	N.D.	N.D.	N.D.	0.005	Not Detected

Remark:

1. N.D. = Not Detected (below MDL)
2. MDL = Method Detection Limit
3. % = Percentage

4) Toxic Substances Control Act-Decabromobiphenylether (decaBDE)

With reference to EPA 3550C:2007 & EPA 8270E:2018, Analysis was performed by solvent extraction, followed by Gas Chromatography Mass Spectrometric (GC/MS).

Test Item	CAS No	Result (%)					MDL (%)	Limit (%)
		(1)	(2)	(3)	(4)	(5)		
Decabromodiphenyl ether	1163-19-5	N.D.	N.D.	N.D.	N.D.	N.D.	0.005	Not

Test Item	CAS No	Result (%)					MDL (%)	Limit (%)
		(1)	(2)	(3)	(4)	(5)		
(DecaBDE)								Detected

Test Item	CAS No	Result (%)				MDL (%)	Limit (%)
		(6)	(7)	(8)	(9)		
Decabromodiphenyl ether (DecaBDE)	1163-19-5	N.D.	N.D.	N.D.	N.D.	0.005	Not Detected

Test Item	CAS No	Result (%)				MDL (%)	Limit (%)
		(10)	(11)	(12)	(13)		
Decabromodiphenyl ether (DecaBDE)	1163-19-5	N.D.	N.D.	N.D.	N.D.	0.005	Not Detected

Remark:

1. N.D. = Not Detected (below MDL)
2. MDL = Method Detection Limit
3. % = Percentage

5) Toxic Substances Control Act-Phenol, isopropylated phosphate (PIP(3:1))

With reference to EPA 3550C:2007 & EPA 8270E:2018, Analysis was performed by solvent extraction, followed by Gas Chromatography Mass Spectrometric (GC/MS).

Test Item	CAS No	Result (%)					MDL (%)	Limit (%)
		(1)	(2)	(3)	(4)	(5)		
Phenol, isopropylated phosphate (3:1) [PIP (3:1)]	68937-41-7	N.D.	N.D.	N.D.	N.D.	N.D.	0.005	Not Detected

Test Item	CAS No	Result (%)				MDL (%)	Limit (%)
		(6)	(7)	(8)	(9)		
Phenol, isopropylated phosphate (3:1) [PIP (3:1)]	68937-41-7	N.D.	N.D.	N.D.	N.D.	0.005	Not Detected

Test Item	CAS No	Result (%)				MDL (%)	Limit (%)
		(10)	(11)	(12)	(13)		
Phenol, isopropylated phosphate (3:1) [PIP (3:1)]	68937-41-7	N.D.	N.D.	N.D.	N.D.	0.005	Not Detected

Remark:

1. N.D. = Not Detected (below MDL)

- 2. MDL = Method Detection Limit
- 3. % = Percentage

---End of Report---